

Alef Implant

A versatile implant system with a single restoration platform, suitable for all indications, delivering predictable results for smart dentists

[LET'S CONNECT](#)

Quality Standards

Our products are made with strict quality checks and meet the highest global standards, ensuring top-quality for you and your patients

[ABOUT MSDI](#)

(Link: <https://msdi-dental.com/about/>)

Wide Range of Solutions

We offer a diverse selection of prosthetics to meet all your clinical needs. Our range includes screw-retained and locator systems, giving you flexibility for various cases. You can also take advantage of our CAD-CAM components and digital libraries for EXOCAD and 3SHAPE, making integration into your practice smooth and efficient. Plus, our modern abutments are designed for optimal performance and aesthetics, ensuring you deliver outstanding results for your patients.

The Alef in Detail

The Alef implant is a high-performance solution designed for both beginners and experts. It combines ease of use with practicality, delivering excellent short- and long-term results.

Based on proven scientific principles, the Alef implant features the widely recognized internal hex system, demonstrating that simplicity, quality, and performance can go hand in hand. Its versatility makes it suitable for a wide range of bone types and augmentation procedures.

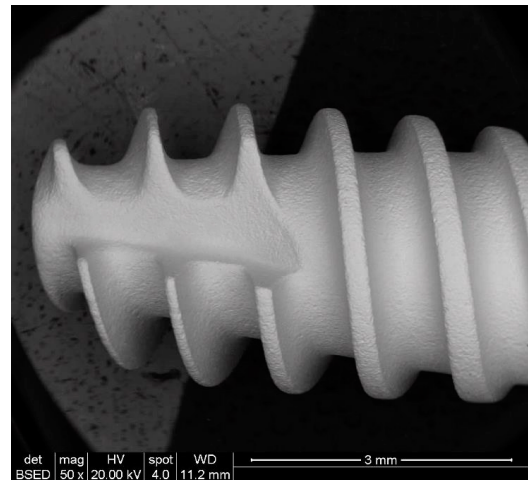
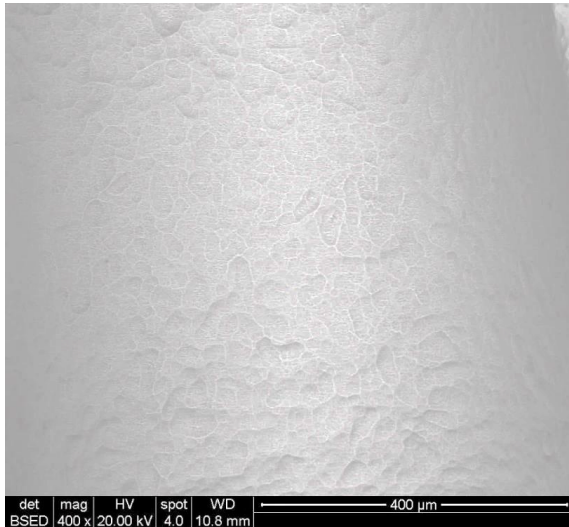
With superior self-drilling capabilities and a tapered body, the Alef implant establishes a strong and stable connection, allowing for immediate loading. Above all, it is incredibly user-friendly, making it the complete package for any clinical indication.

[VIEW CATALOG](#)

SLA surface treatment

Text From the catalog

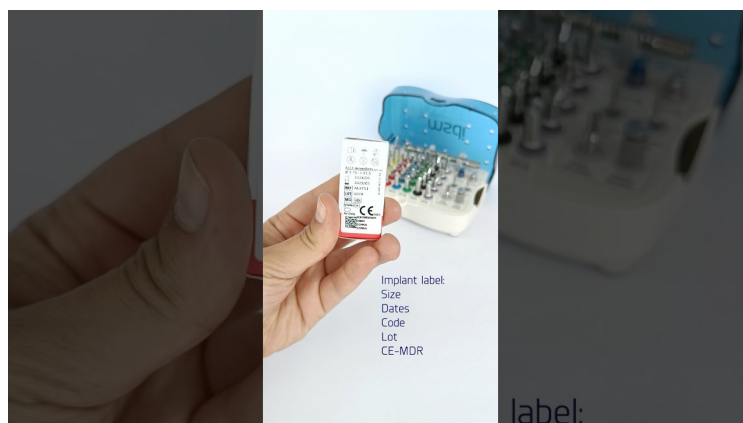
Use photo like this:



Patented Delivery System

The Alef implant features a patented delivery system that ensures precise placement and enhances user control during the implantation process. This innovative system streamlines procedures, making it easier for clinicians to achieve optimal results with confidence.

Use image of the package OR video:




CAD CAM System

Experience modern CAD CAM solutions designed for high tolerance and accuracy, ensuring a seamless and effective impression and restoration process. Our digital library is available for both EXOCAD and 3SHAPE.


CAD/CAM

Our modern products feature high tolerance and accuracy to ensure a convenient and effective restoration.




Ti-base

Rotational and Anti-rotational designs combined with and non-engaging design combined with different collar heights.




Scan body

High-accuracy scanning component made of PEEK and available in different lengths.



Digital analog

Implant replica that simulates the implant position in a 3D printed digital model.



Multi unit components

Ti-base, scan body and digital analog for customized screw-retained restorations

Our digital library is available for 3SHAPE and EXOCAD and includes all of our CAD/CAM components.

[Download Digital Library >](#)

(From this page: <https://msdi-dental.com/digital-solutions/>)

Guided Surgery

Our keyless guided kit empowers you to perform highly precise guided surgery, effortlessly combining digital planning with real-world execution. With meticulously calculated drill lengths, you can achieve accurate osteotomies at the ideal implant depth for optimal results. Experience digital precision, keyless efficiency, and surgical mastery with ease.

(Make the kit a bit larger so they can see it in detail)

****remove the download button****

Available Sizes

....

Drilling Protocol

.....

Case Study

A multicenter study led by Dr. Luca Barbera in Milan evaluated the performance of 54 MSDI Alef implants across two clinics, involving three surgeons and a heterogeneous sample of 27 patients.

The study found a high success rate and effective integration. Results confirm the implant system's reliability and compliance with European standards, highlighting its usability in modern implantology.

[READ MORE](#)